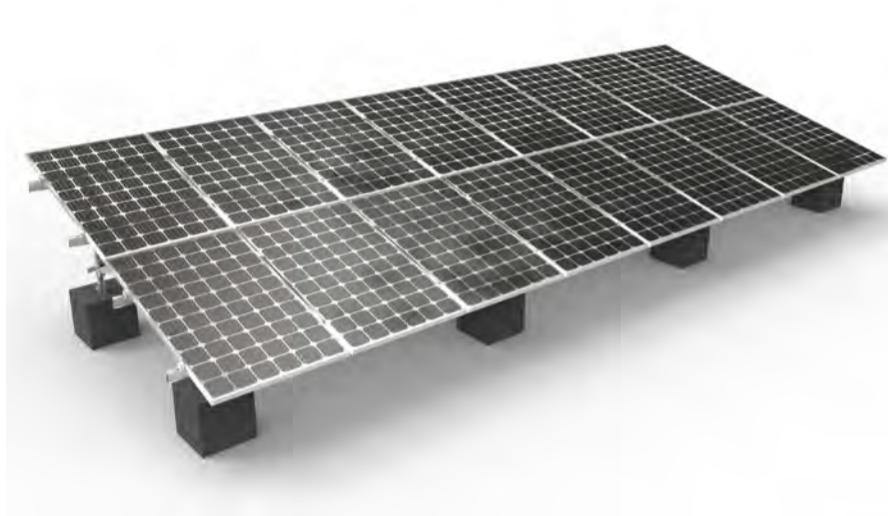


全铝支架系统 Aluminum Rooftop System



项目案例 Job Reference

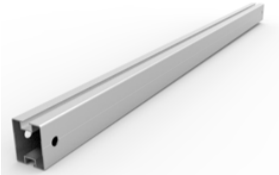
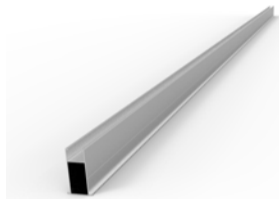
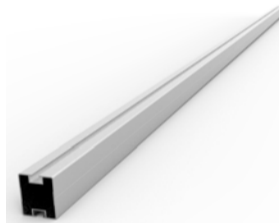
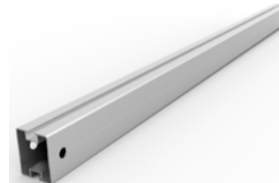


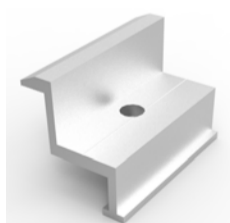
技术数据 Technical Description

适用区域 Application	地面/平面屋顶 Ground/Pland Roof
风荷载 Wind Load	30m/s
系统排布 Module Layout	按照实际要求设计 Customized Design
系统材质 Material	铝合金 Aluminum Alloy
表面处理 Surface Treatment	阳极氧化 Anodizing
服务时间 Service life	25 years
设计标准 Design Standard	按照实际要求设计 Customized Design

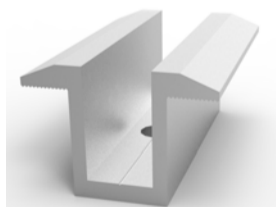
全铝支架系统产品清单

主要部件详图

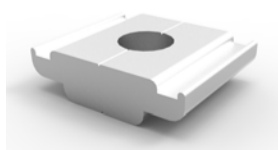
序号	名称	效果图	材料
1	主梁		6063-T5
2	次梁		6063-T5
3	立柱		6063-T5
4	斜撑		6063-T5



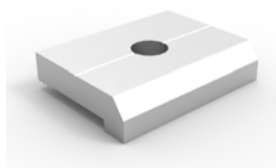
边压码



中压码



螺母块



压块

